



**Beaufort County Public Works
Stormwater Infrastructure
Project Summary**

Project Summary: Warsaw Island Road Outfall

Project #: 2011-554 Completed: Feb-11

Narrative Description of Project:
Project improved 3,956 L.F. of drainage system. Cleaned out 3,956 L.F. of outfall ditch. Installed (1) bleeder pipe.

Material Cost, Rental Equipment Summary, and Labor

Material	Unit	Cost/Unit	Qty	Cost
12" HDPE Pipe	linear feet	\$4.86	20.0	\$97.20
Fill Dirt	ton	\$1.00	15.9	\$15.91
Pin Flag	each	\$0.06	59.0	\$3.54
Diesel	gallon	\$2.81	676.5	\$1,900.97
Gas	gallon	\$2.95	57.7	\$170.22
Labor	hours		613.0	\$13,352.10
Indirect Labor, Services, and Supplies				\$9,208.51
Total Cost of Materials, Rental Equip., and Labor				\$24,748.44

Note: Labor cost includes the employee's salary plus fringe benefits.

Equipment Cost

Item	Asset	Cost/Hour	Hrs.	Cost
Cat 325 Excavator	16649	\$22.84	13.5	\$308.34
Cat 308D Excavator	23514	\$27.58	8.0	\$220.64
Komatsu Mini Excavator	23000	\$14.90	3.0	\$44.70
JCB Urban Excavator	23364	\$31.45	22.0	\$691.90
JD Loader 444J	23271	\$29.75	1.0	\$29.75
Bobcat T320	23388	\$21.00	7.0	\$147.00
Lowboy	23118	\$34.64	4.0	\$138.56
Dump Trucks		\$13.31	196.0	\$2,608.76
Pickup Trucks		\$4.12	143.5	\$591.22
Total Equipment Cost				\$4,780.87

Cost/hour excludes fuel cost.

Total Cost: \$29,529.31

Site Photographs

Before

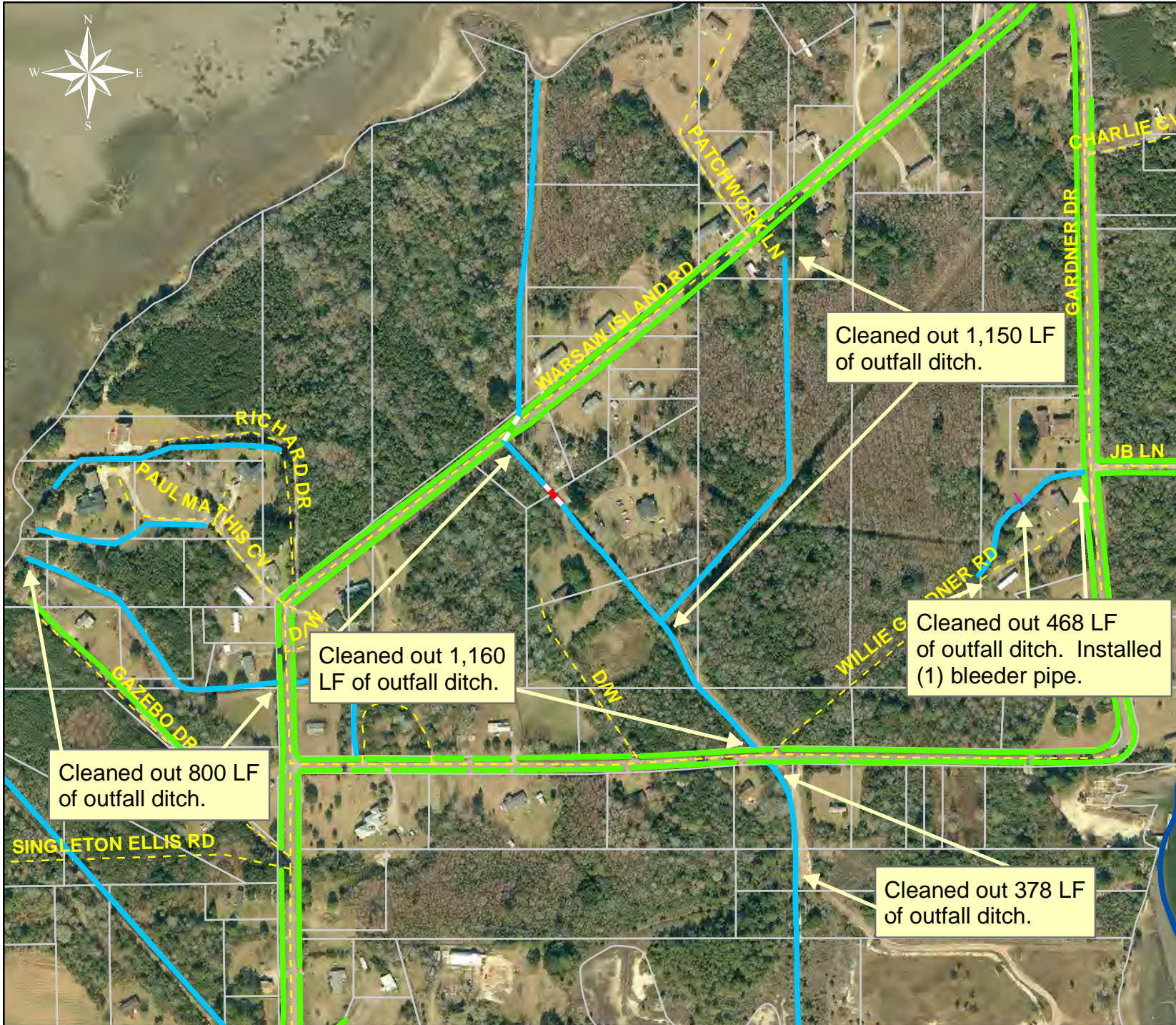


During



After





Project: Warsaw Island Road Outfall

Activity: Drainage Maintenance

Project #: 2011-554

Township: St. Helena Island

Completed: February 2011

Legend

Drainage Type

- River
- Stream
- Outfall
- Lateral
- Lateral Pipe
- Roadside
- Roadside Pipe
- Road Pipe
- Crossline
- D/W
- Access
- Piped
- Bleeder
- Parcels

0 125 250 500 750 1,000 Feet

1 inch = 400 feet

Prepared By: BC Stormwater Management Utility

Date Print: 5/20/11

File: C:/sethdata/projects/projectmaps/Warsaw Island Rd 2011-554